

AGUARDIO HUB GUIDE

Monitor data collected by Leak sensors and Shower Sensors via their connected Gateways or the Aguardio App.

1. Log In and Permission

3. Leak Sensor

- 3.1 Leak Sensor Menu
- 3.2 Leak Sensor status
- 3.3 Statistics
- 3.4 Raw Data

2. Aguardio Hub Dashboard

4. Shower Sensor

- 4.1 Shower Sensor Menu
- 4.2 Shower Statistics
- 4.3 Shower Raw Data

1. Login and Permission

- Go to <https://admin.aguardio.com/>
- Create an account. Click on **"Sign up now"**
- Enter your email address and click on **"Send Verification code"**
Important: To register successfully, you must use the same e-mail address, that was provided to Aguardio.
- Enter the verification code you received in your e-mail and click on **"Verify code"**
- Create your password, insert your first name and last name, click on **"Create"**
- Log in to the system by entering your e-mail and password created in the previous step (as shown below)

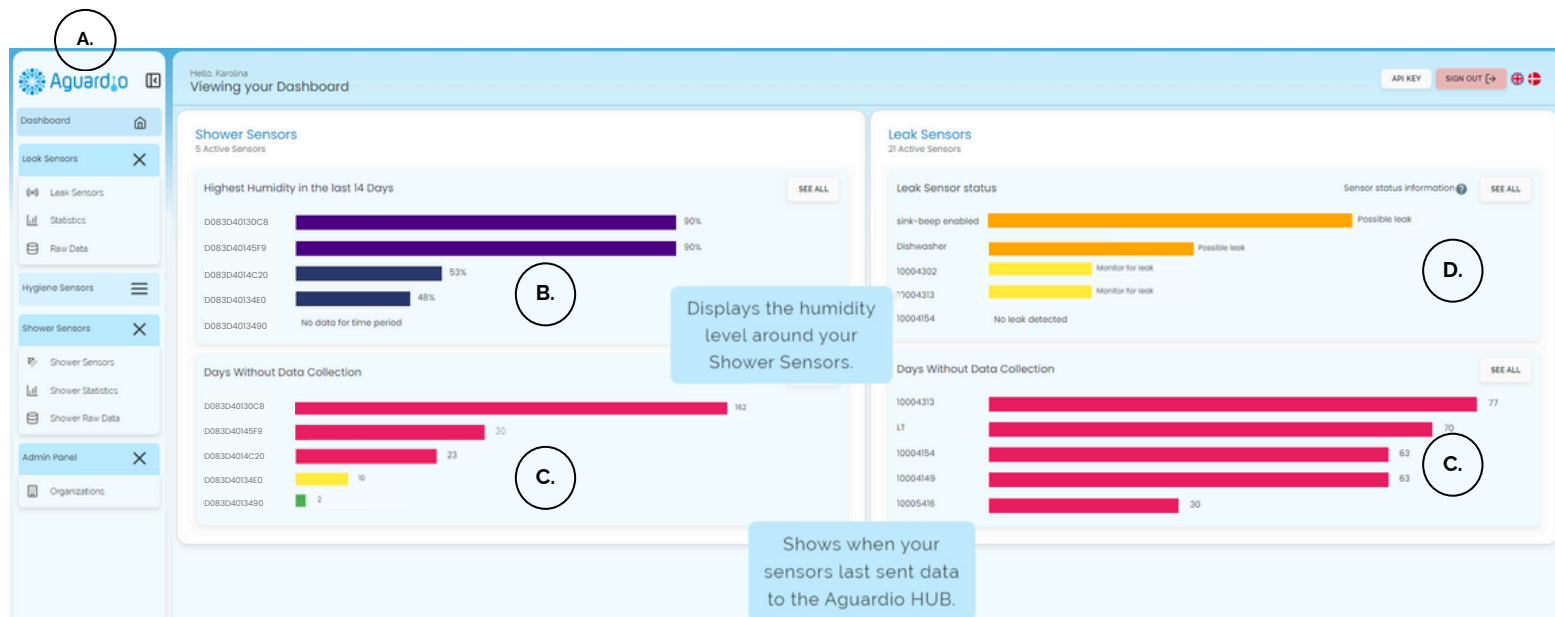
The image shows two side-by-side screenshots of the Aguardio Hub interface. The left screenshot is titled 'Sign in' and features a 'Sign in with your email address' section with input fields for 'Email Address' and 'Password', a 'Forgot your password?' link, a 'Keep me signed in' checkbox, and a 'Sign in' button. Below this is a 'Sign in with your social account' section with buttons for 'Aguardio Azure AD', 'Google Personal Account', and 'Amazon Personal Account'. A 'Sign up now' link is circled in red. The right screenshot is titled 'User Details' and has a '< Cancel' button at the top left. It contains an 'Email Address' input field, a 'Send verification code' button circled in red, and input fields for 'New Password', 'Confirm New Password', 'Display Name', 'Given Name', and 'Surname'. A 'Create' button is at the bottom.

AGUARDIO HUB GUIDE

2. Dashboard

After logging in to Aguardio Hub, you'll be directed to a Dashboard view, where you can get an quick overview over your data.

- A.** On the left-hand side you will find a navigation menu
 - Click on a product category to view its sub-categories.
 - Hover your mouse over the elements on any Dashboard for explanations
- B.** **Highest Humidity in the last 14 days** - Displays the average humidity levels recorded by your Shower Sensors.
- C.** **Days without data collection** - Shows how many days ago, your Shower/Leak Sensors last sent data.
 - Shower sensor can store up to 30 days worth of data.
 - Leak Sensor can store up to 14 days worth of data
- D.** **Leak Sensor Status** - Toilet leaks are categorised in Aguardio Hub into four categories: **Likely Leak**, **Possible Leak**, **Monitor for Leak**, and **No Leak**. Hover your mouse over the leak status column to see quick tips regarding recommended actions. For further information about these categories, please refer to page 4 of this document.



Even if you've only purchased one type of product, you'll still have access to view categories for all our products

Account user roles

Depending on your account's role, the Aguardio Hub view may vary. Account can be assigned to either a "User" or "SuperUser" role. The main difference between these roles are that "User" is not able to view sensitive data. Please see table on the next page for reference.

AGUARDIO HUB GUIDE

| | User | SuperUser |
|--|------|-----------|
| See leaking toilets based on a 4 categories | x | x |
| See accumulated Shower Sensor data | x | x |
| Edit & see Shower & Leak Sensor name | x | x |
| Edit & see Shower & Leak Sensor location | | x |
| Edit & distribute Shower & Leak Sensors into departments | | x |
| See toilet flush data | x | x |
| See ambient & room temperature data | | x |
| See individual Shower Sensor data | | x |
| Export Shower & Leak Sensor raw data | | x |

If your role has to be changed, please contact Aguardio at support@aguardio.com.

3. Leak Sensor

3.1 Leak Sensor Menu

Under the Leak Sensor section (see next page for further reference), you can:

- A. See a list of your Leak Sensors and the last data collection timestamps**
- B. See a list of your Gateways (if there are any)**
 - Click on "See Gateways" in the upper right corner
- C. Edit Leak Sensor/Gateway details, such as: Location (Only available for "SuperUser" account), Name, Leak Sensor type**
 - Click on the edit icon under the "Action" column
- D. See more details about Leak Sensor/Gateway**
 - Click on info button under the "Action" column
- E. Distribute your sensors into Departments (Only available for "SuperUser" account)**
 - Click on the dropdown box under the "Department" column and choose a department that you want to assign your Leak Sensor to.
- F. See a Leak Level of each individual sensor, based on a 4 categories (Please refer to page 4 of this document).**
- G. Export a list of your Leak Sensors/ Gateways into CSV file**

AGUARDIO HUB GUIDE

| A. | Name & Serial Number | Location | Organization | E. | Department | A. | Last Data Collection | F. | Leak Level | Actions |
|----|---------------------------------|----------|---------------|----|------------|----|----------------------|----|------------------|------------------------|
| | sink - beep enabled 10004112 | 1_sink | Karolina TEST | | | | 07-03-2024 | | Monitor for leak | C. [edit] [refresh] D. |
| | WC - beep off 10004150 | 2_WC | Karolina TEST | | | | 07-03-2024 | | No leak detected | [edit] [refresh] |
| | LT 10003119 | LT | Karolina TEST | | | | 28-12-2023 | | No leak detected | [edit] [refresh] |

Items per page: 10 | 1 - 3 / 3

Please note: Location information only available for "SuperUser" account

3.2 Leak Sensor Status

Toilet leaks are displayed in Aguardio Hub in the following 4 categories based on data collected from Leak Sensors along with short descriptions and quick tips regarding which action is advised to be taken. Categories are colour coded for simplicity to identify toilets which maybe should be given highest priority regarding maintenance. Consider these priorities when formulating a service strategy aligned with your organization's objectives, aimed at maximizing water and financial savings in total.

| | | |
|--|--|---|
| | Likely leak | <p>◀◀ <i>Likely leaking, consider prioritising checking the toilet as the first ones</i></p> |
| | Possible leak | <p>◀◀ <i>Possible leaking on a lower level and/or frequent on/off leaks (with potentially high water waste!).</i></p> |
| | Monitor situation (maybe include in service!) | <p>◀◀ <i>The data patterns suggest that minor leaks could be occurring and/or some on/off leaking. Consider to include in service work.</i></p> |
| | Probably no leak or very low level | <p>◀◀ <i>No leak detected, action most likely not needed</i></p> |

3.3 Statistics

- A. Devices:** Total number of leak sensors in organization, or chosen department
- B. Flush Count:** Total number of toilet flushes per chosen period
- C. Avg. daily flushes:** View the average number of toilet flushes. If you choose to view data per sensor, the system will display the average number of flushes for that sensor
- D. Avg. flushes by weekday:** Find out the busiest day of the week.
- E. Average flush count per day per sensor**

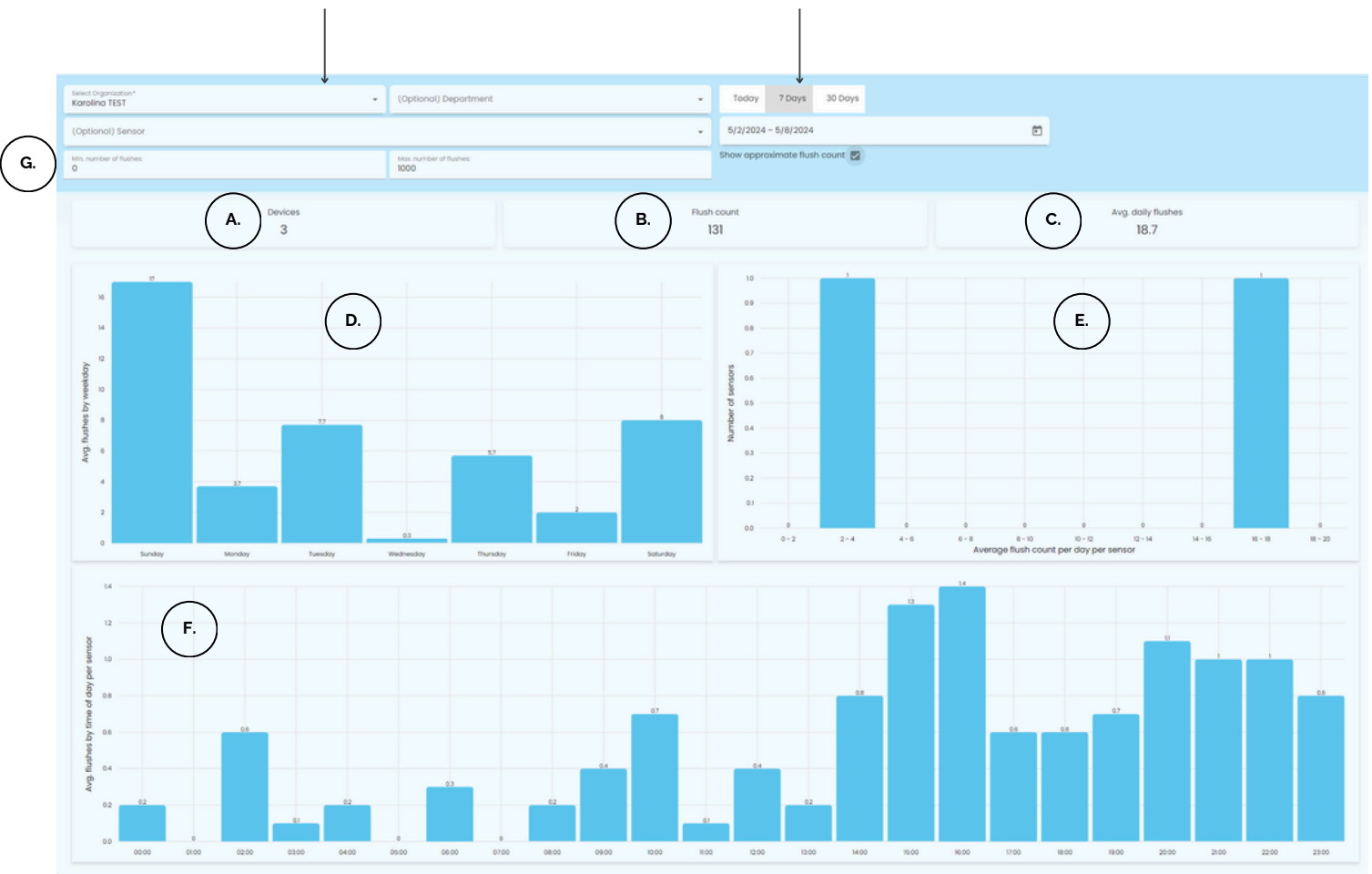
AGUARDIO HUB GUIDE

F. Avg flushes by time of day per sensor: Find out the busiest time of the day

G. Adjust the dashboard view by filtering out unwanted toilet flushes: You can set the minimum and maximum number of toilet flushes, so the system will filter out data outside the chosen thresholds

1. Choose your organization

2. Select date range



3.4 Raw data (Available only for "SuperUser" account)

To extract raw data into CSV file, please select organization, department (if needed) and a date range. There is an automatic option to extract data from the last **24 Hours**, **7 days** or **30 days**; you can also choose a date range on your own. Then click "**Export Table Data**".

The form includes the following fields and options:

- Search:** Input field for searching.
- Date Range:** Radio buttons for "Last Day", "7 Days", and "30 Days".
- Export Table Data:** Button to initiate data export.
- Organization:** Dropdown menu with "A" selected.
- Department:** Dropdown menu with "(Optional) Select Depart..." selected.
- Date Range:** Input field for "Start Date - End Date" with a calendar icon.

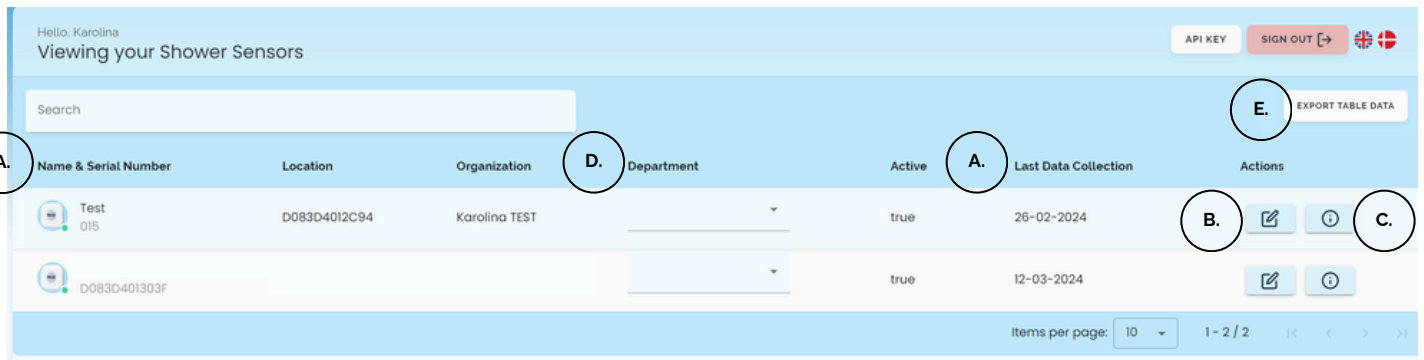
AGUARDIO HUB GUIDE

4. Shower Sensor

4.1 Shower Sensor Menu

See a list of all Aguardio Shower Sensors within your organization, and relevant information about your shower sensors. In this section you can:

- A. See a list of your Aguardio Shower Sensors and the last data collection timestamps**
- B. Edit Shower Sensor details, such as: Location (Only available for "SuperUser" account), Name**
 - Click on the edit icons under "Action" column
- C. See more details about Shower Sensor**
 - Click on the info button under "Action" column
- D. Distribute your sensors into Departments (Only available for "SuperUser" account)**
 - Click on a dropdown box under "Department" column and choose a department that you want to assign your Shower Sensor to.
- E. Export a list of your Aguardio Shower Sensors into CSV file**



Please note: Location information only available for "SuperUser" account

4.2 Shower Statistics

Under the statistics, you can see accumulated data collected from the Shower Sensors in your organization. **(If you are "SuperUser" you can also view data per individual sensor)**

In order to see data visualizations, please select organization, and the date range. There is an automatic option to see data from the last **24 Hours**, **7 days** or **30 days**; you can also choose a custom data range if you wish.

AGUARDIO HUB GUIDE

HOW YOU CAN USE AGUARDIO SHOWER SENSOR DATA

- A. Average Shower time for a particular period:** Monitor user showering behavior in your organization
- B. Bathroom health:** Monitor humidity levels to detect any health issues.
- C. Total water duration in minutes and number of showers distributed into time intervals:** Monitor whether there has been a change in shower duration.
- D. Total water time per hour and avg. water time by weekday:** Identify the peak days and hours of the day to pinpoint when your facilities are the busiest. These insights allow you to streamline maintenance & cleaning routines as well as ensure adequate water supply.
- E.** Tick the **"Only show validated showers"** box, if you want to exclude short showers below 40 seconds from your data overview.

1. Choose your organization

2. Select date range



AGUARDIO HUB GUIDE

4.3 Shower Raw data (Available only for "SuperUser" account)

To extract raw data into csv file, please select organization, department (if needed) and a date range. There is an automatic option to extract data from the last **24 Hours**, **7 days** or **30 days**; you can also choose a date range on your own. Then click "**Export Table Data**".

The screenshot shows a light blue interface for exporting data. It features a search bar at the top left. To its right are three buttons: 'Last Day' (highlighted), '7 Days', and '30 Days'. Further right is a button labeled 'Export Table Data'. Below the search bar are two dropdown menus: 'Select organization*' with 'A' selected, and '(Optional) Select Depart...'. To the right of these is a date range selector labeled 'Start Date - End Date' with a calendar icon.

After clicking on '**Export Table Data**,' a new window will pop up. From there, you can filter out short showers from the data set, which could potentially be handwashes.

The dialog box is titled 'How to export raw data'. It contains two radio button options: 'Include all data' (unselected) and 'Exclude showers that are shorter than 40 seconds' (selected). The number '40' is in a light blue box. At the bottom, there are two buttons: 'Export' (with a download icon) and 'Cancel'.